

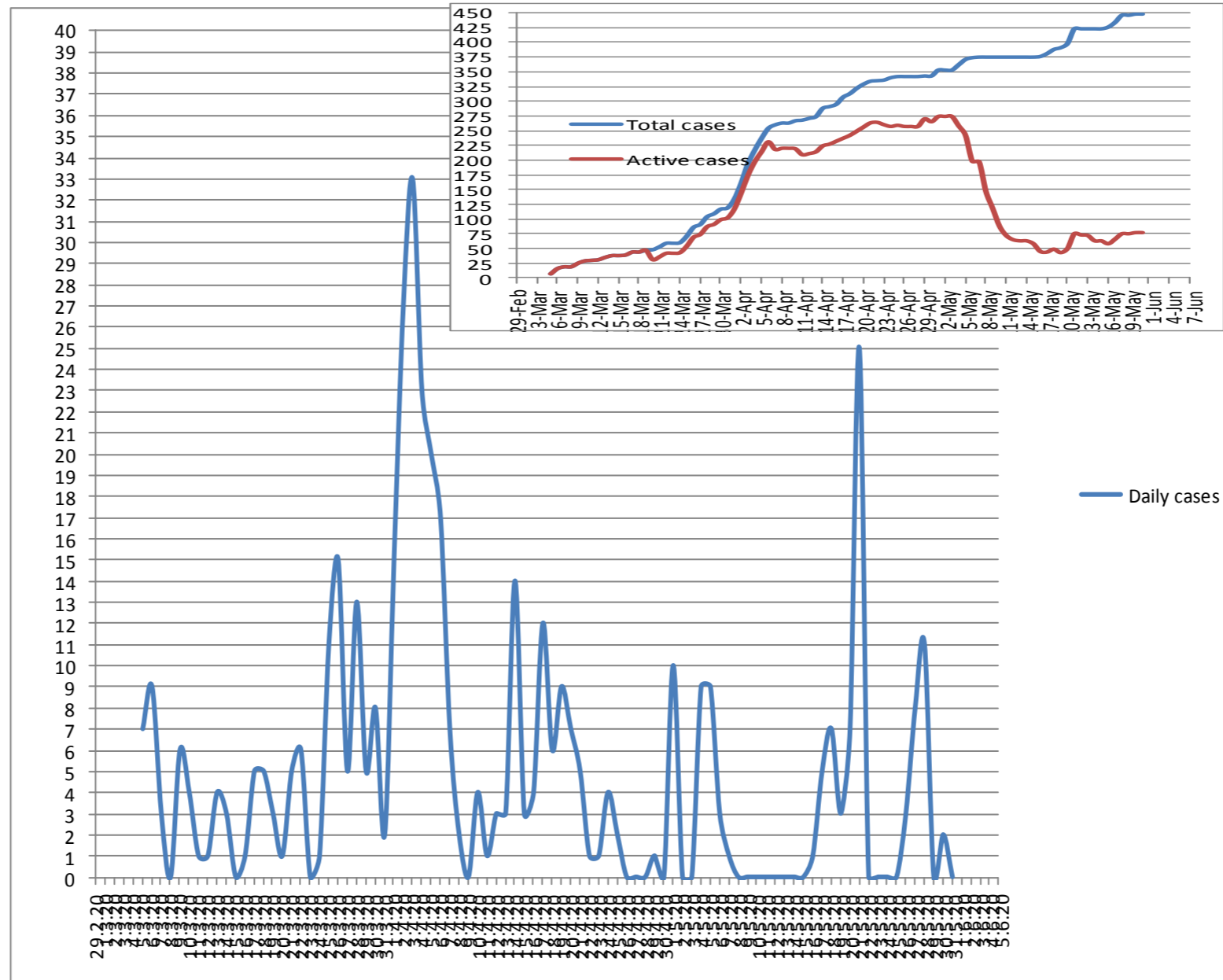
Update: Sunday 31/05/2020

COVID - 19 Update in Palestine



Cases Statistics

| 3/2020 | Daily | Tot. | 4/2020 | Daily | Tot. | 5/2020 | Daily | Tot. |
|--------|-------|------|--------|-------|------|--------|-------|------|
| 1 | 0 | 0 | 1 | 15 | 134 | 1 | 10 | 353 |
| 2 | 0 | 0 | 2 | 27 | 161 | 2 | 0 | 353 |
| 3 | 0 | 0 | 3 | 33 | 194 | 3 | 0 | 353 |
| 4 | 0 | 0 | 4 | 23 | 217 | 4 | 9 | 362 |
| 5 | 7 | 7 | 5 | 20 | 237 | 5 | 9 | 371 |
| 6 | 9 | 16 | 6 | 17 | 254 | 6 | 3 | 374 |
| 7 | 3 | 19 | 7 | 7 | 261 | 7 | 1 | 375 |
| 8 | 0 | 19 | 8 | 2 | 263 | 8 | 0 | 375 |
| 9 | 6 | 25 | 9 | 0 | 263 | 9 | 0 | 375 |
| 10 | 4 | 29 | 10 | 4 | 26 | 10 | 0 | 375 |
| 11 | 1 | 30 | 11 | 1 | 268 | 11 | 0 | 375 |
| 12 | 1 | 31 | 12 | 3 | 271 | 12 | 0 | 375 |
| 13 | 4 | 35 | 13 | 3 | 274 | 13 | 0 | 375 |
| 14 | 3 | 38 | 14 | 14 | 288 | 14 | 0 | 375 |
| 15 | 0 | 38 | 15 | 3 | 291 | 15 | 0 | 375 |
| 16 | 1 | 39 | 16 | 4 | 295 | 16 | 1 | 376 |
| 17 | 5 | 44 | 17 | 12 | 307 | 17 | 5 | 381 |
| 18 | 5 | 44 | 18 | 6 | 313 | 18 | 7 | 388 |
| 19 | 3 | 47 | 19 | 9 | 322 | 19 | 3 | 391 |
| 20 | 1 | 48 | 20 | 7 | 329 | 20 | 7 | 398 |
| 21 | 5 | 53 | 21 | 5 | 334 | 21 | 25 | 423 |
| 22 | 6 | 59 | 22 | 1 | 335 | 22 | 0 | 423 |
| 23 | 0 | 59 | 23 | 1 | 336 | 23 | 0 | 423 |
| 24 | 1 | 60 | 24 | 4 | 340 | 24 | 0 | 423 |
| 25 | 11 | 71 | 25 | 2 | 342 | 25 | 0 | 423 |
| 26 | 15 | 86 | 26 | 0 | 342 | 26 | 3 | 426 |
| 27 | 5 | 91 | 27 | 0 | 342 | 27 | 8 | 434 |
| 28 | 13 | 104 | 28 | 0 | 342 | 28 | 11 | 446 |
| 29 | 5 | 109 | 29 | 1 | 343 | 29 | 0 | 446 |
| 30 | 8 | 117 | 30 | 0 | 343 | 30 | 2 | 448 |
| 31 | 2 | 119 | | | | 31 | 0 | 448 |



Cases & deaths percentages for 1m population

| Country | Tot. Case/1m pop | Deaths/1m pop |
|-----------|------------------|---------------|
| China | 58 | 3 |
| USA | 5509 | 319 |
| Italy | 3854 | 553 |
| Spain | 6124 | 580 |
| Germany | 2190 | 103 |
| France | 2890 | 441 |
| Israel | 1851 | 31 |
| Egypt | 230 | 9 |
| Jordan | 72 | 0.9 |
| Palestine | 81 | 0.5 |

World:
 Tot. Cases /1m pop.: 796
 Deaths/1m pop: 47.7

Confirmed Cases

| | West bank & Gaza strip | Jerusalem Inside the wall | Total |
|-----------|------------------------|---------------------------|-------|
| All cases | 448 | 179 | 627 |
| Active | 77 | 22 | 99 |
| Recovered | 368 | 155 | 523 |
| Deaths | 3 | 2 | 5 |

Samples & Quarantine

Cumulative number of samples: **58613**
 Actual home quarantine: **22990**

| | No. | % |
|---------------------------------------|-----|-------|
| Total Population Centers in Palestine | 621 | 100 % |
| Total Infected Centers | 59 | 9.5 % |
| Centers with Active Cases | 7 | 1.1 % |

Total cases according to governorate (448 cases)

| | | |
|---------------------------------|--------------------------------|---------------------------------|
| Jenin (0.9 %) 4 | Bethlehem (13.2%) 59 | Tolkarem (1.3 %) 6 |
| Gaza strip (13.6%) 61 | Jericho (0.2 %) 1 | Tonbas 0 |
| Hebron (17.6 %) 79 | Ramallah (%17.2) 77 | Jerusalem (31.1%) 140 |
| Salfeet (0.2 %) 1 | Qalqilya (%2.9)13 | Nablus (%1.6)7 |

Cases according to classification

| | | |
|--------------------------------|---|---|
| Travelers (14.5 %)65 | Contact with workers (44.4%) 199 | Workers (25.7%)115 |
| Prisoners (% 0.3%)1 | Contact with tourists (8.9 %)40 | Contact with travelers (%2.7)12 |
| other (% 0.4%)2 | Contact with Med. staff (% 1.1%)5 | Medical staff (% 2)9 |

Active cases (77 cases)

| | | | |
|----------------------------|--------------------------------|------------------------------|--|
| Gaza (54.5 %) 42 | Qalqilya (% 16.9) 13 | Hebron (27.2 %) 21 | Jerusalem (Outside the wall) (% 1.3) 1 |
|----------------------------|--------------------------------|------------------------------|--|



← Palestinian communities outside Palestine